

THP-500

UNIT SPECIFICATIONS:

POWER SUPPLY: 115V/1PH/60Hz/20A
AIR DELIVERY: 3,000 CFM
BTU INPUT: 40,300 - 500,000

FUEL SUPPLY:

PROPANE: 10 PSI
CONNECTION: 1/2" NPT
NATURAL: 1/4 - 4 PSI
CONNECTION: 1" NPT

DIMENSIONS:

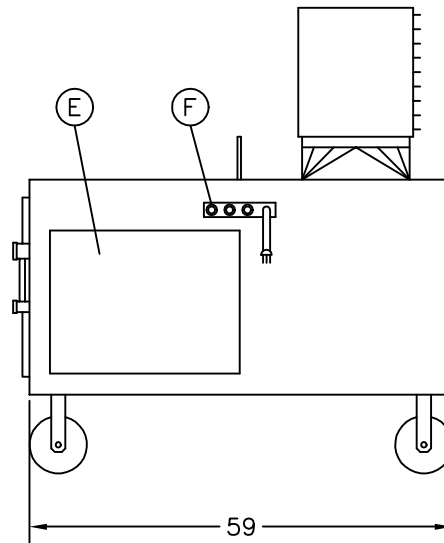
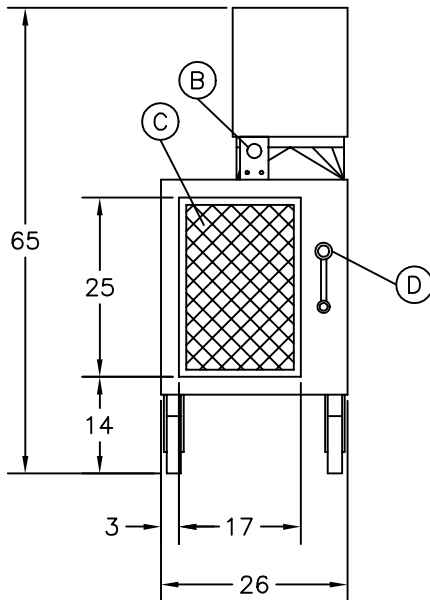
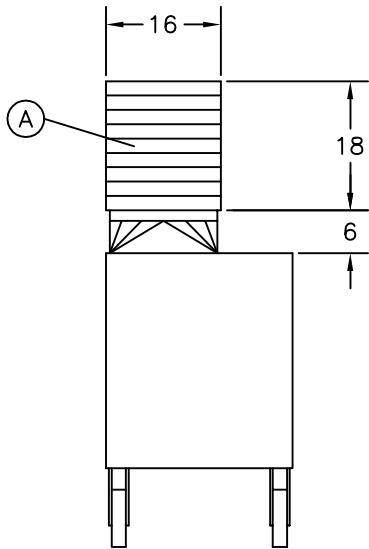
LENGTH (IN): 59
WIDTH (IN): 26
HEIGHT (IN): 65
WEIGHT (LBS): 500

NOTES:

CONTACT TEMP-AIR FOR OTHER
GAS PRESSURES.

UNIT COMPONENTS:

- (A) DISCHARGE HOOD
- (B) LIFTING EYE
- (C) INTAKE SCREEN
- (D) GAS INLET
- (E) SERVICE ACCESS ELECTRICAL/MANIFOLD
- (F) CONTROL PANEL



L.M. Temperature Control Inc.

DRAWN: ACJ

APPROVED: DLG

DRAWING NUMBER:

DATE: 11.06.01

DATE: 11.13.01

THP500