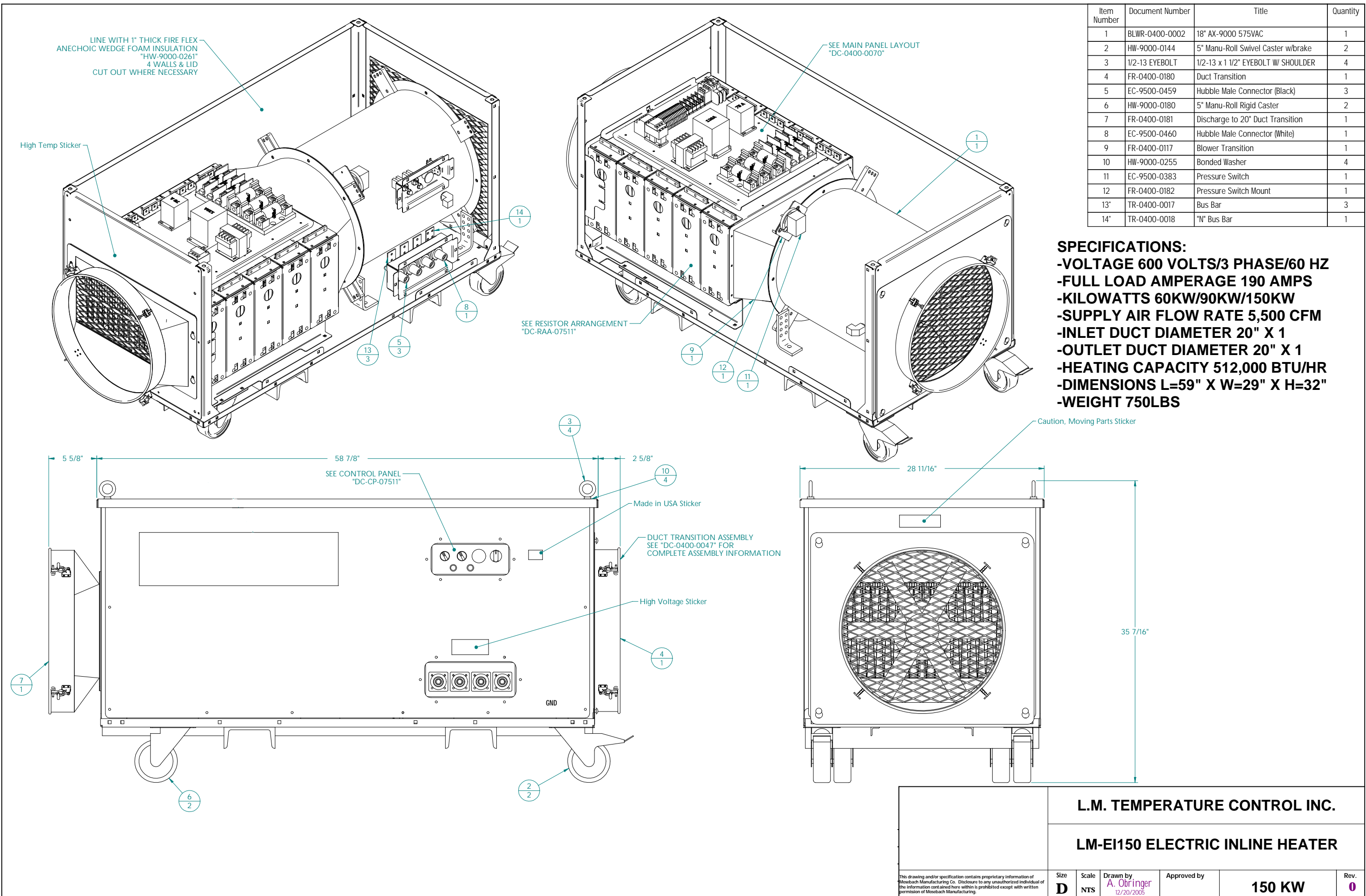


Item Number	Document Number	Title	Quantity
1	BLWR-0400-0002	18" AX-9000 575VAC	1
2	HW-9000-0144	5" Manu-Roll Swivel Caster w/brake	2
3	1/2-13 EYEBOLT	1/2-13 x 1 1/2" EYEBOLT W/ SHOULDER	4
4	FR-0400-0180	Duct Transition	1
5	EC-9500-0459	Hubble Male Connector (Black)	3
6	HW-9000-0180	5" Manu-Roll Rigid Caster	2
7	FR-0400-0181	Discharge to 20" Duct Transition	1
8	EC-9500-0460	Hubble Male Connector (White)	1
9	FR-0400-0117	Blower Transition	1
10	HW-9000-0255	Bonded Washer	4
11	EC-9500-0383	Pressure Switch	1
12	FR-0400-0182	Pressure Switch Mount	1
13	TR-0400-0017	Bus Bar	3
14	TR-0400-0018	"N" Bus Bar	1

SPECIFICATIONS:

- VOLTAGE 600 VOLTS/3 PHASE/60 HZ
- FULL LOAD AMPERAGE 190 AMPS
- KILOWATTS 60KW/90KW/150KW
- SUPPLY AIR FLOW RATE 5,500 CFM
- INLET DUCT DIAMETER 20" X 1
- OUTLET DUCT DIAMETER 20" X 1
- HEATING CAPACITY 512,000 BTU/HR
- DIMENSIONS L=59" X W=29" X H=32"
- WEIGHT 750LBS



L.M. TEMPERATURE CONTROL INC.

LM-EI150 ELECTRIC INLINE HEATER

This drawing and/or specification contains proprietary information of Mosebach Manufacturing Co. Disclosure to any unauthorized individual of the information contained here within is prohibited except with written permission of Mosebach Manufacturing.

Size D	Scale NTS	Drawn by A. Obringer 12/20/2005	Approved by	150 KW	Rev. 0
------------------	--------------	--	-------------	---------------	------------------